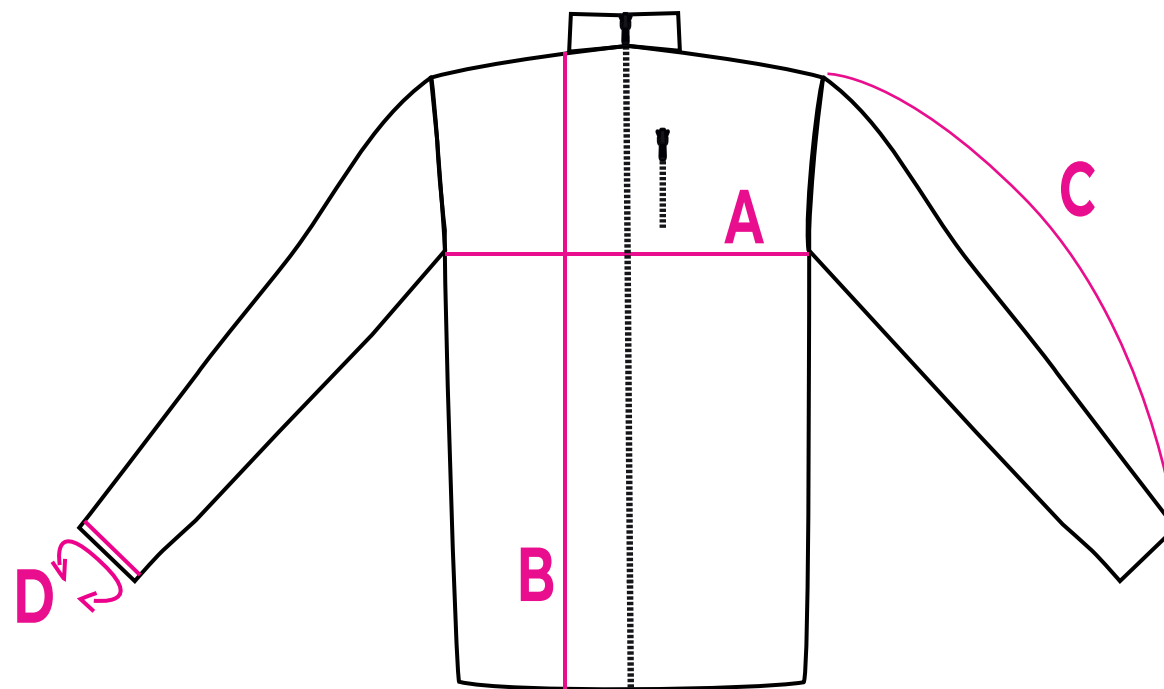


# MEN'S SIZES

PRINT ON FABRIC

## SOFTSHELL JACKET

STRAIGHT CUT



- A - width across the chest
- B - length
- C - length of sleeve
- D - sleeve circumference

	XS	S	M	L	XL
A	50	53	58	63	67,8
B	65	70	74,3	79,4	79,4
C	62,7	64,8	67,3	70,7	73,5
D	28	28	28	29	30

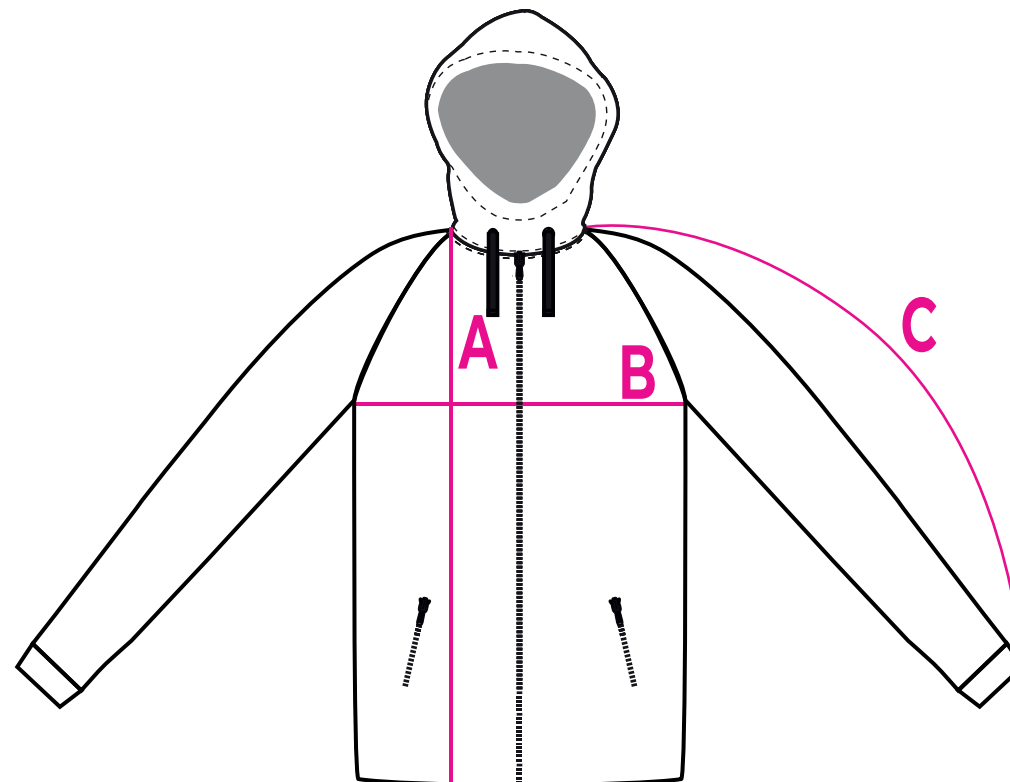
Sizes are in centimeters. Sewing tolerances are +/- 2 cm

# MEN'S SIZES

PRINT ON FABRIC

## SOFTSHELL JACKET WITH HOOD

STRAIGHT CUT



A - length  
 B - width  
 C - length of sleeve

	XXS	XS	S	M	L	XL	2XL	3XL
A	51	56	62	66	70	71	76	76
B	46	48	51	55	59	63	66	71
C	58	63	73	78	81	84	88	90

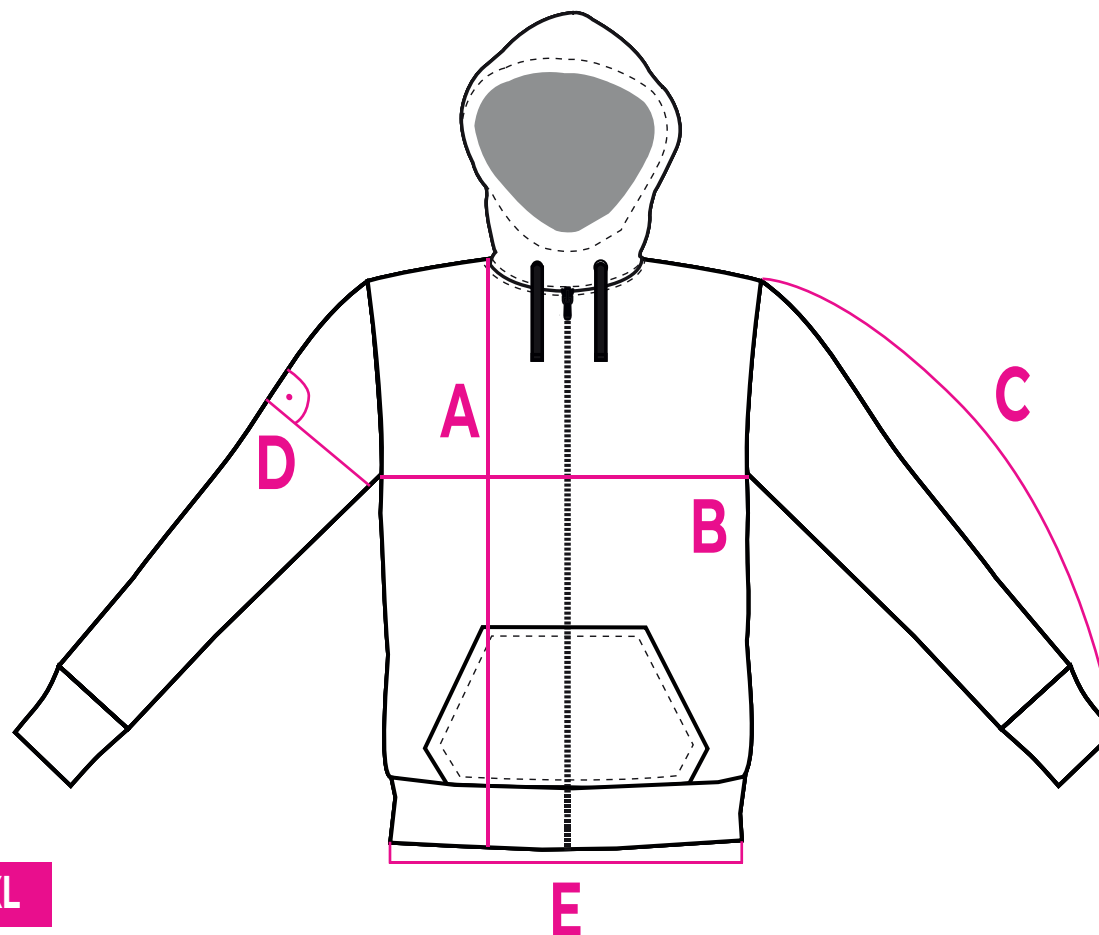
Sizes are in centimeters. Sewing tolerances are +/- 2 cm

# MEN'S SIZES

PRINT ON FABRIC

## HOODIE

STRAIGHT CUT



	S	M	L	XL	2XL	3XL	4XL
A	68	68,3	73,5	73,8	73,8	74,6	79,8
B	54,4	59,1	67,2	67,2	70,4	74,4	78,4
C	65,4	65,4	67,4	67,4	67,4	67,4	69,4
D	22	23	24	25	26	27	28
E	48,3	51,1	55,2	59,2	62,4	66,4	70,3

A - length  
B - width  
C - length of sleeve  
D - width of sleeve  
E - width of bottom belt

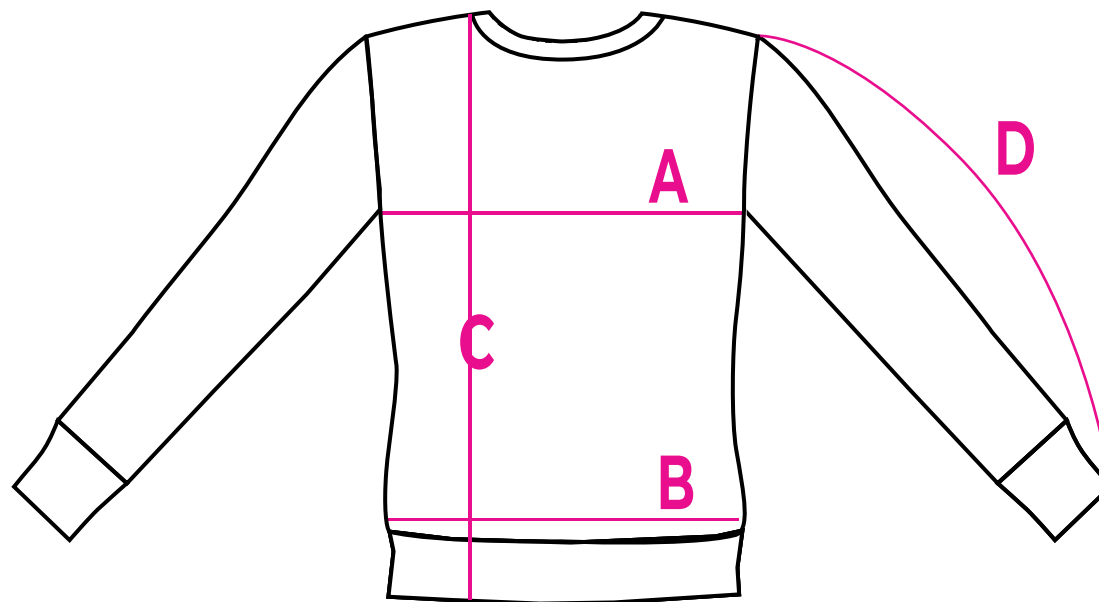
Sizes are in centimeters. Sewing tolerances are +/- 2 cm

# MEN'S SIZES

PRINT ON FABRIC

## SWEATSHIRT EASY

STRAIGHT CUT



A - width across the chest

B - width across the hips

C - length

D - length of sleeve

	XS	S	M	L	XL	2XL
A	46,4	49,2	52,3	57	62,4	67,5
B	45,4	48,2	51,3	56	61,4	66,5
C	61,5	66,3	71,5	77,1	81,8	85
D	60,4	61,7	63,7	66	70	73

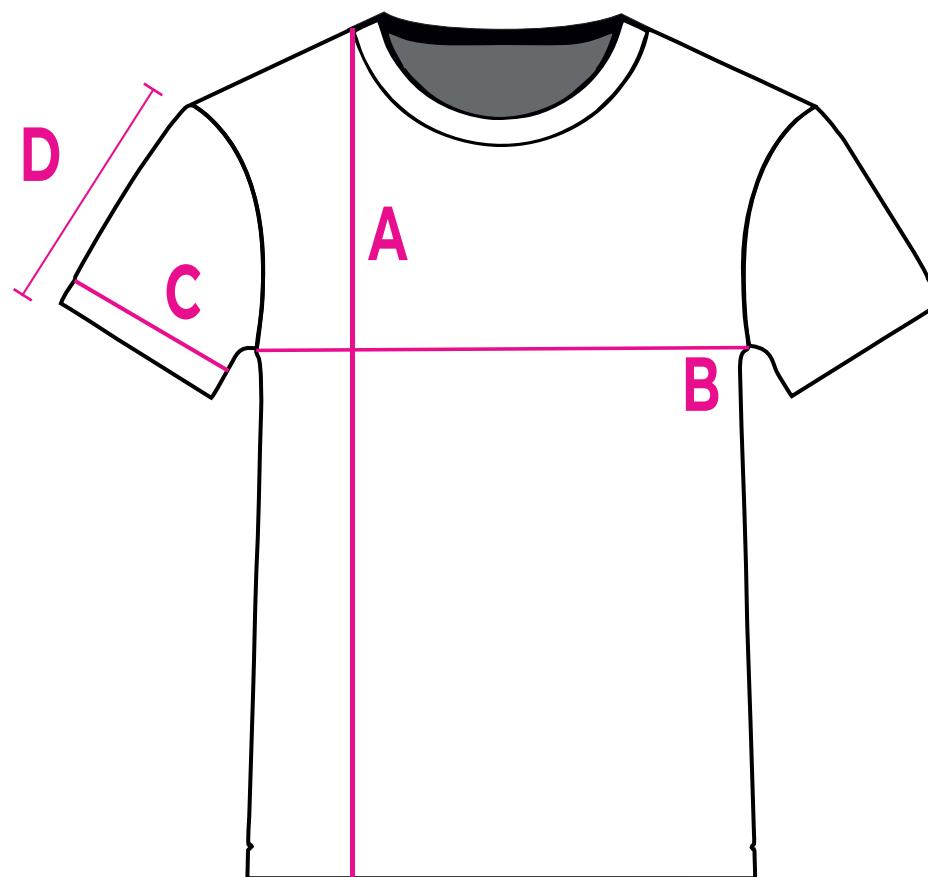
Sizes are in centimeters. Sewing tolerances are +/- 2 cm

# MEN'S SIZES

PRINT ON FABRIC

## T-SHIRT STRAIGHT CUT

	S	M	L	XL	2XL	3XL	4XL
A	68,8	71,7	73,6	76,5	81	84	88
B	48,5	52	56	58,5	60,5	65,5	71
C	43,4	45,2	45,2	45,2	45,2	45,2	43
D	19,6	20,5	21,3	22,5	23	23	22



A - length  
B - width  
C - width of sleeve  
D - length of sleeve

Sizes are in centimeters. Sewing tolerances are +/- 2 cm