

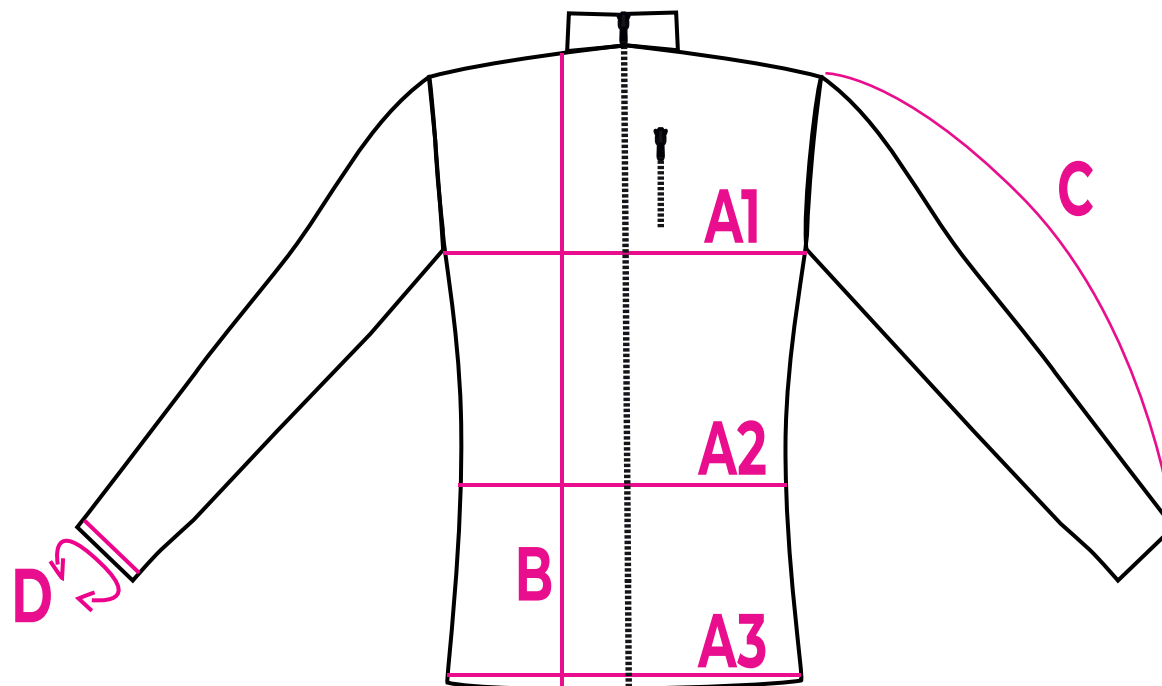
# WOMEN'S SIZES

PRINT ON FABRIC

## SOFTSHELL JACKET

SLIM FIT CUT

	XS	S	M	L
A1	47	49,7	51,7	53,7
A2	41,8	44,2	45,9	47,7
A3	47,8	49,7	51,7	53,7
B	63,5	64	64,8	69,3
C	63	64	66	66
D	20,4	21,5	22,4	23,3



- A1 - width across the chest
- A2 - width across the belt, the narrowest point
- A3 - width across the hips
- B - length
- C - length of sleeve
- D - sleeve circumference

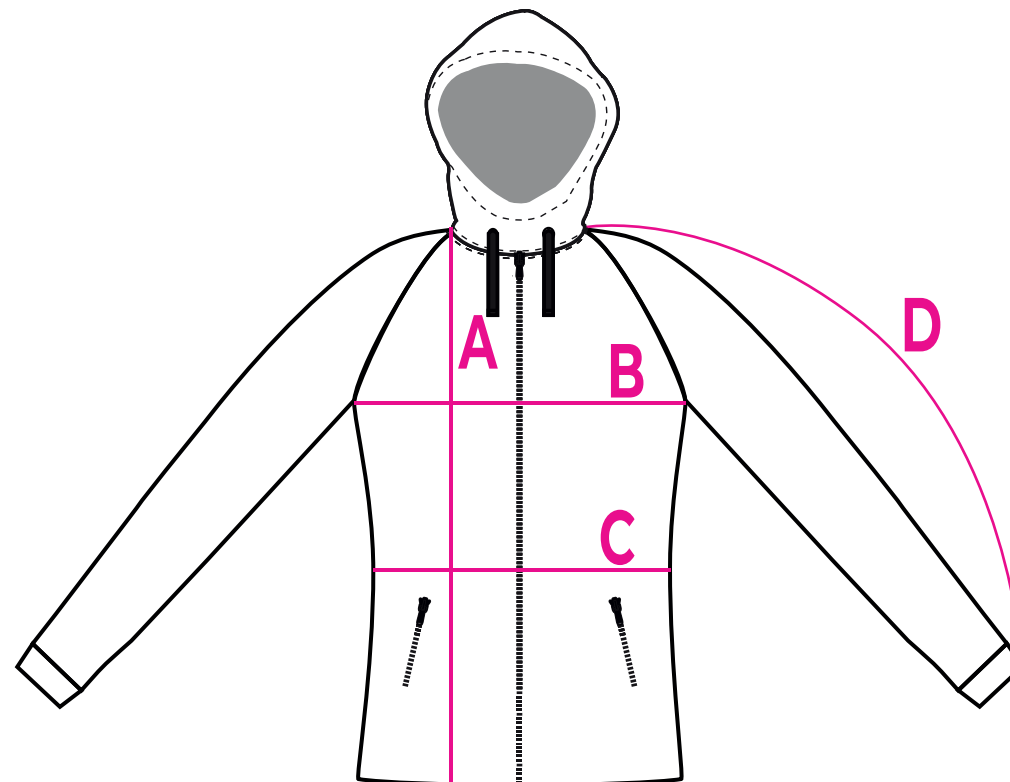
Sizes are in centimeters. Sewing tolerances are +/- 2 cm

# WOMEN'S SIZES

PRINT ON FABRIC

## SOFTSHELL JACKET WITH HOOD

SLIM FIT CUT



	130	140	S	M	L	XL	2XL	3XL
A	52	57	62	66	71	71	76	76
B	41	45	48	51	54	57	61	64
C	41	44	46,5	49,5	52,5	55,5	58	61
D	67	70	73	75	77	79	81	82,5

A - length  
 B - width across the chest  
 C - width across the belt  
 D - length of sleeve

Sizes are in centimeters. Sewing tolerances are +/- 2 cm

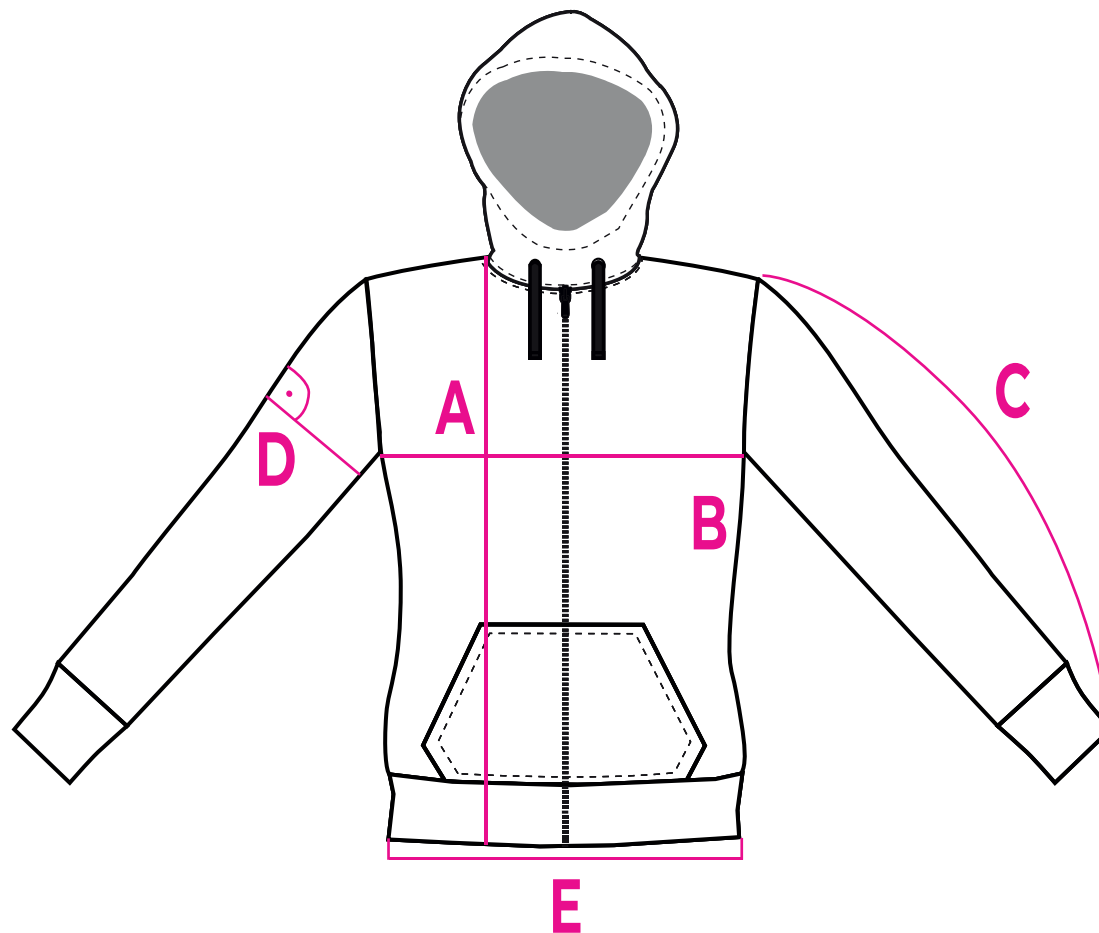
# WOMEN'S SIZES

PRINT ON FABRIC

## HOODIE

SLIM FIT CUT

	XS	S	M	L	XL
A	63,3	63,8	64,7	69,1	70,1
B	47,5	50,2	52,1	64,2	56,1
C	68,9	64	65,9	72,4	70
D	18	19	19,8	20,6	21,3
E	46,4	49	51	53	54,9



A - length  
B - width  
C - length of sleeve  
D - width of sleeve  
E - width of bottom belt

Sizes are in centimeters. Sewing tolerances are +/- 2 cm

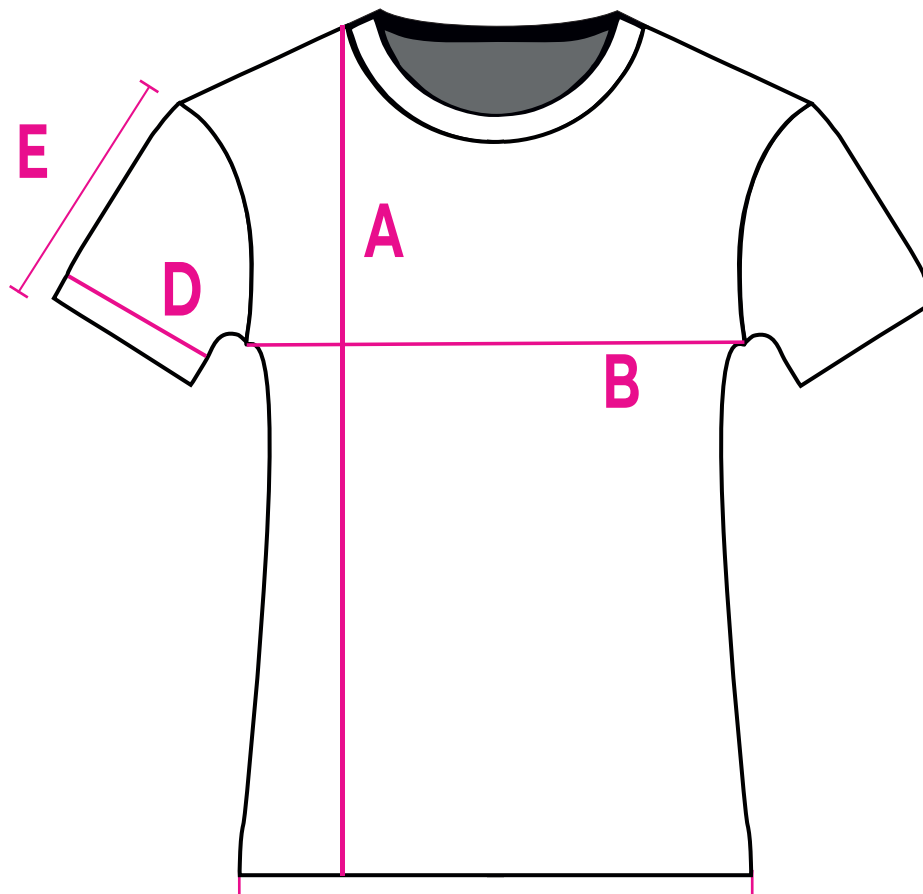
# WOMEN'S SIZES

PRINT ON FABRIC

## T-SHIRT

SLIM FIT CUT

	XS	S	M	L	XL
A	66,5	66,6	69,3	69,8	70
B	38	42	46	50	52
C	31,9	34,4	36,9	39,4	30,5
D	19	20	21	22	18,5
E	41	45	49	53	21,5



F

- A - length
- B - width
- C - length from neckline to end of sleeve
- D - width of sleeve
- E - length of sleeve
- F - width of bottom hem

Sizes are in centimeters. Sewing tolerances are +/- 2 cm